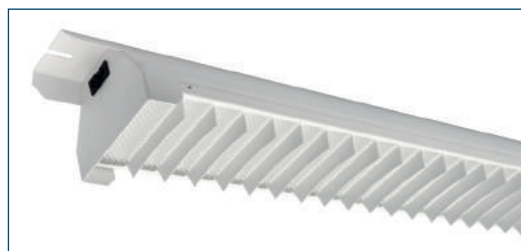


# BLADE WHT LED

Industrial LED Luminaire  
with White Reflector



CE ENEC



BLADE WHT LED2X3600 D406 T840 PRZ WIE



BLADE WHT LED2X3600 D406 T840 OP LT80 1WIE

**Type:** An innovative LED luminaire with white reflector to suit all retail and industrial demands.

**Specification:** Diffusers: clear (CLR), prismatic (PRZ) or opal (OP LT80).  
White painted steel cross blades and reflector for a better glare protection.  
Body is made of white steel.  
Luminaire is plastic-wrapped and packed in single boxes.

**Installation:** Surface luminaire is designed to be fixed to ceiling of any type or suspended.

**Application:** Indoor. For use in warehouses, halls, factories, supermarkets other commercial environments.



Through wired version 3x1,5mm<sup>2</sup> with 3 poles Wieland type connectors on both sides (male & female type). Quick installation features save project time and money.  
See option list: WIE

Name	Overall dimensions (LxWxH), mm	Lifetime	Luminaire output*, lm Ta=25°C	System power*, W	CRI (Ra)	CCT, K	Weight, kg
Blade WHT LED2x2500 D405 T840	1250x137x101	50000	4999	41	80+	4000	4,20
Blade WHT LED2x3600 D406 T840	1250x137x101	50000	7018	61	80+	4000	4,20
Blade WHT LED2x5100 D407 T840	1250x137x101	50000	10032	83	80+	4000	4,20

\* Tolerance range for optical and electrical data: ±10 %

### Options available on request:

- SDIM – Switch-control/dimming
- DALI – DALI driver
- EMG – Emergency version 1 hour
- EM3 – Emergency version 3 hours
- 1LIN2.5 – Through wiring 3x2.5 mm<sup>2</sup> with two push-in terminals
- 3LIN2.5 – Through wiring 5x2.5 mm<sup>2</sup> with two push-in terminals
- L1 – Driver connected to L1 line
- L2 – Driver connected to L2 line
- L3 – Driver connected to L3 line
- WIE – 3-pole Wieland or similar connector (5-pole connector is available on request)
- OP LT80 – Opal diffuser with 80% light transmission
- MPRZ LT92 – Microprismatic diffuser for a better glare protection
- T830 – Colour temperature 3000K
- T840 – Colour temperature 4000K

### BLADE WHT LED2X3600 D406 T840

